

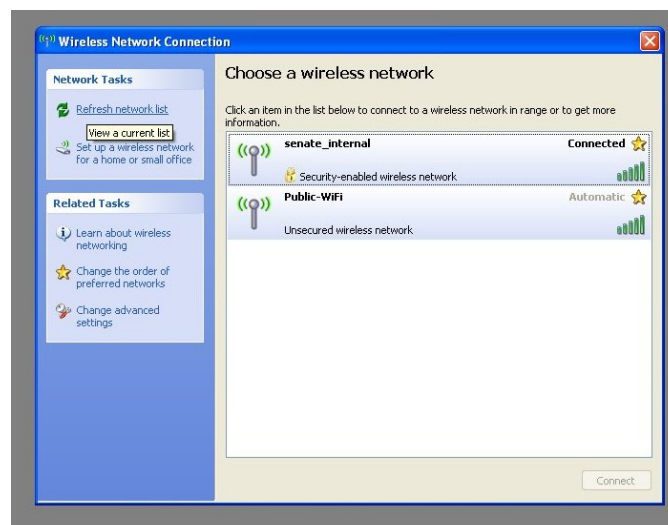
## Missouri State Senate Public Wireless Access

The Missouri Senate is pleased to make wireless internet access available to the general public. Although Senate staff is not available to support the general public, the wireless network should work with most mobile devices that have wireless connectivity. This sheet will give you an idea of what to expect when using the public wireless.

It is impossible to anticipate the varieties of hardware and software in use by the public, and the Senate makes no guarantees that your particular configuration will work with our wireless network.

The Senate's wireless network is available only on the Senate side of the Capitol. The House also offers wireless accessibility. For more information on the House service, please contact House Information Systems.

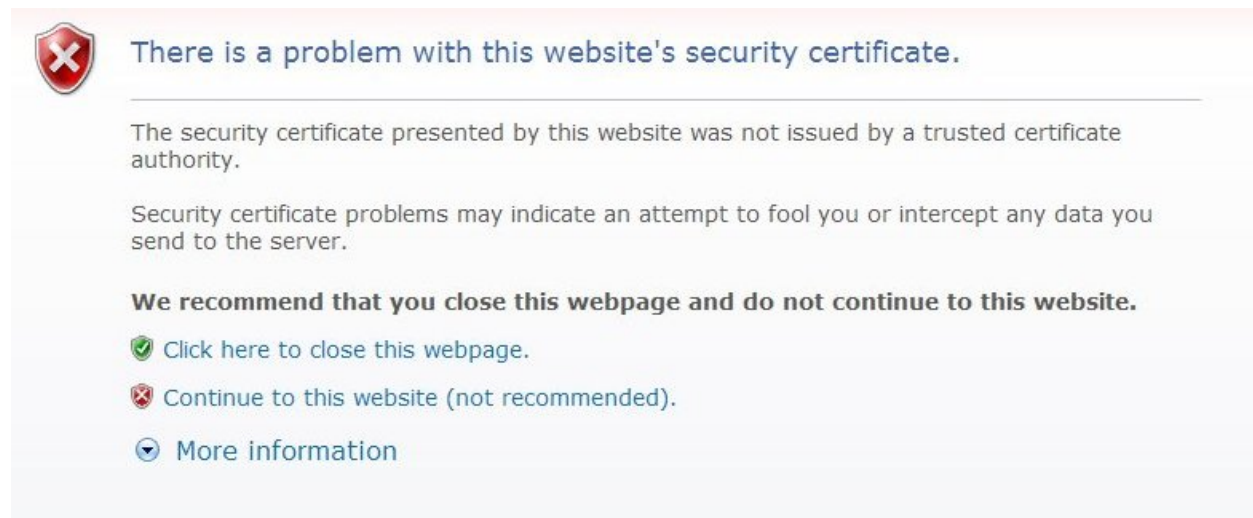
When you initially enter an area covered by the public wireless, your device should automatically detect a signal presence. Depending on your hardware and software, you should be able to check this by right-clicking the wireless network icon in your system tray and then clicking View Available Wireless Networks.



Highlight **'Public-WiFi'** and click 'Connect', or use whatever procedure your hardware and software configuration requires to connect to a new network.

After you have successfully connected, open Internet Explorer, or your internet browser of choice.

You may receive an alert regarding the security certificate of the wireless controller. Click 'OK', or whatever your browser requires, to continue. In Internet Explorer 7, the alert reads as follows:



In this case, you will need to click 'Continue to this website (not recommended)'. Depending on your browser, your alert may appear differently. Some browsers may not display this alert at all.

The wireless controller will automatically redirect your browser to the Acceptable Use Policy. This process can take a minute or two. Please be patient.

You must read this policy and click 'Accept' at the bottom of the page to use the wireless network. The policy appears as follows:



**You must agree to the following terms and conditions of use before continuing. Please read and click the 'Accept' button at the bottom of the page if you agree.**

---

The Missouri Senate offers its wireless hotspot as a free, public service for users. Unlimited access will be granted to this wireless network as technology and network capacities allow. The Missouri Senate does not guarantee specific rates of speed or uninterrupted service.

Any use of the Senate's network must be in accordance with the provisions of this document. Any activities deemed illegal apply to users whether using their own computer or a Senate owned computer.

Missouri Senate staff is not able to provide technical assistance to the public. No guarantee is made that your wireless equipment will work with the Senate's access points.

Be advised that you use the Senate's wireless network at your own risk. The wireless network is not secure as it is not encrypted using WEP, WPA, etc. Unless you take additional precautions, any information sent to or from your laptop or other wireless device could potentially be intercepted by a third party who might be within range and using the appropriate hardware and/or software.

The Missouri Senate will not be responsible for any information (i.e. credit card) that is compromised, or for any damage caused to your hardware or software resulting from the use of the wireless network. Anti-virus and security protection are the sole responsibility of the user. All wireless access users should have up-to-date virus protection on their laptops or other wireless devices. In addition, to avoid any known security vulnerabilities, all operating systems and software should have the most current patches and updates.

Printing is not available over the wireless network.

The Missouri Senate will not be responsible for laptops or other devices left unattended.

The wireless network may be used for legal purposes only. Examples of illegal use include but are not limited to:

1. Harassing, libeling, or slandering others
2. Unauthorized downloading and/or copying of copyright-protected material
3. Accessing material advocating or constituting child pornography or abuse, or displaying pornography to minors
4. Use of the internet to commit fraud or other crimes

The wireless network is not to be used for:

1. Commercial use
2. Malicious actions, such as denial of service attacks
3. Harassment of other computer users
4. Offering of DHCP or Domain Name Services (DNS)
5. File-sharing or other bandwidth intensive applications that may degrade the quality of service

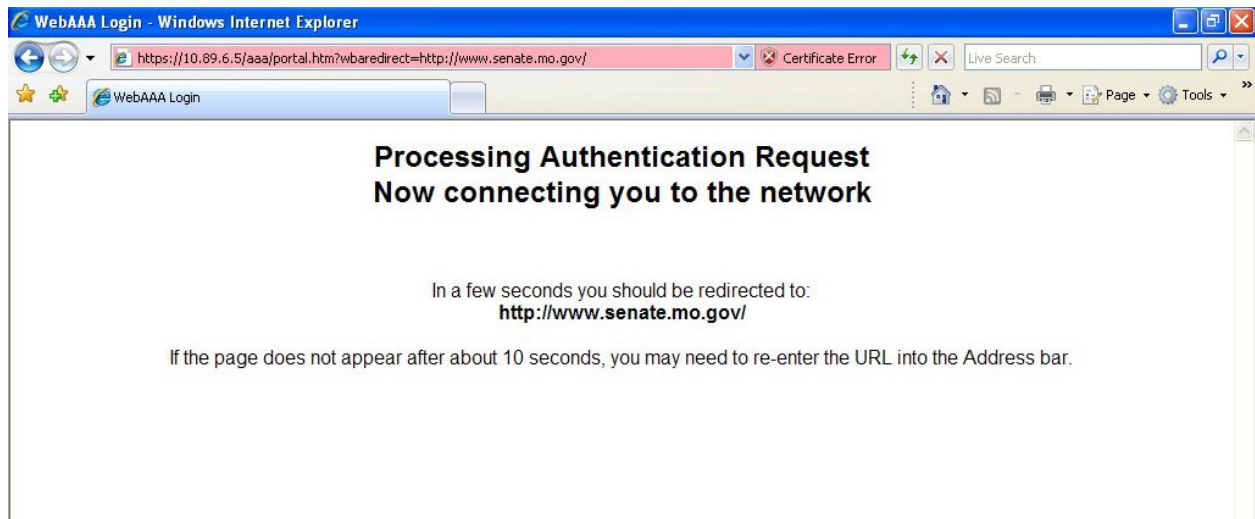
Parents, guardians and caregivers are responsible for their minor children's use of the wireless network.

Failure to comply with this policy may result in wireless network access privileges being suspended. Any use which creates a disturbance or interferes with the ability of others to use the wireless network, or the Capitol building, will not be tolerated.

Accept

---

After you click 'Accept', the controller will validate and register your address and redirect you to the home page configured in your browser. You will see the following message:



You will be required to go through this process each time you use the Senate's wireless network.