

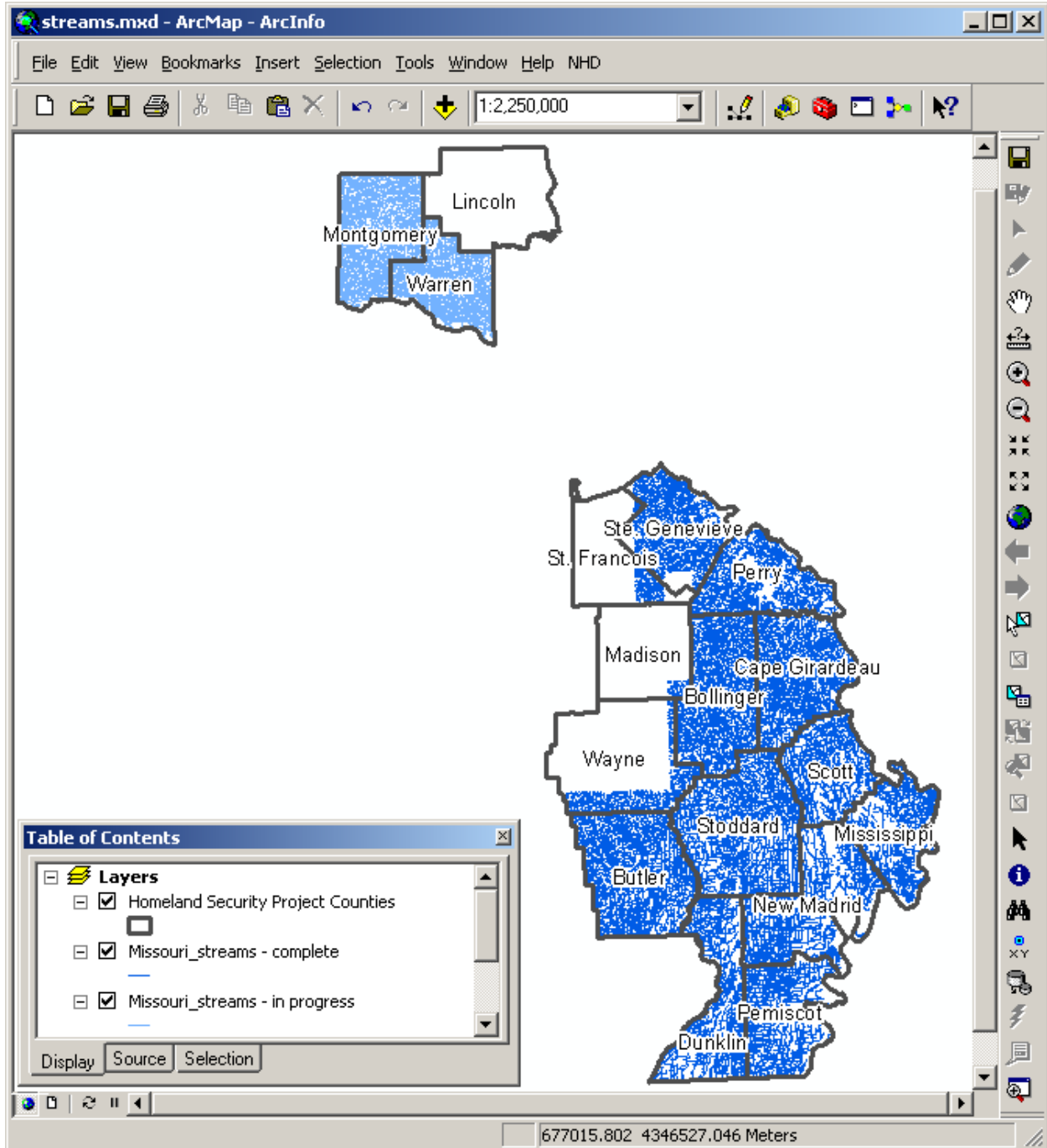
Homeland Security Project Status by County

	County Name	Layers						
		Streams Percent (%)	Roads Percent (%)	Waterbodies Percent (%)	Forest Percent (%)	Structures Percent (%)	Railroads Percent (%)	GNIS & Landmarks Percent (%)
Phase I	Bollinger	100	100	100	100	100	100	100
	Butler	100	100	100	100	100	100	100
	Cape Girardeau	100	100	100	100	100	100	100
	Dunklin	100	100	100	100	100	100	100
	Mississippi	100	100	100	100	100	100	100
	New Madrid	100	100	100	100	100	100	100
	Pemiscot	100	100	100	100	100	100	100
	Perry	100	100	100	100	100	100	100
	Scott	100	100	100	100	100	100	100
	Stoddard	100	100	100	100	100	100	100
Phase II	Lincoln	0	100	44	0	60	100	100
	Madison	6	6	13	2	0	100	100
	Montgomery	60	92	16	0	50	100	100
	St. Francois	19	100	100	100	100	100	100
	Ste. Genevieve	95	100	100	100	100	100	100
	Warren	60	87	0	0	50	100	100
	Wayne	10	10	10	10	100	100	100

Updated 1/10/2010

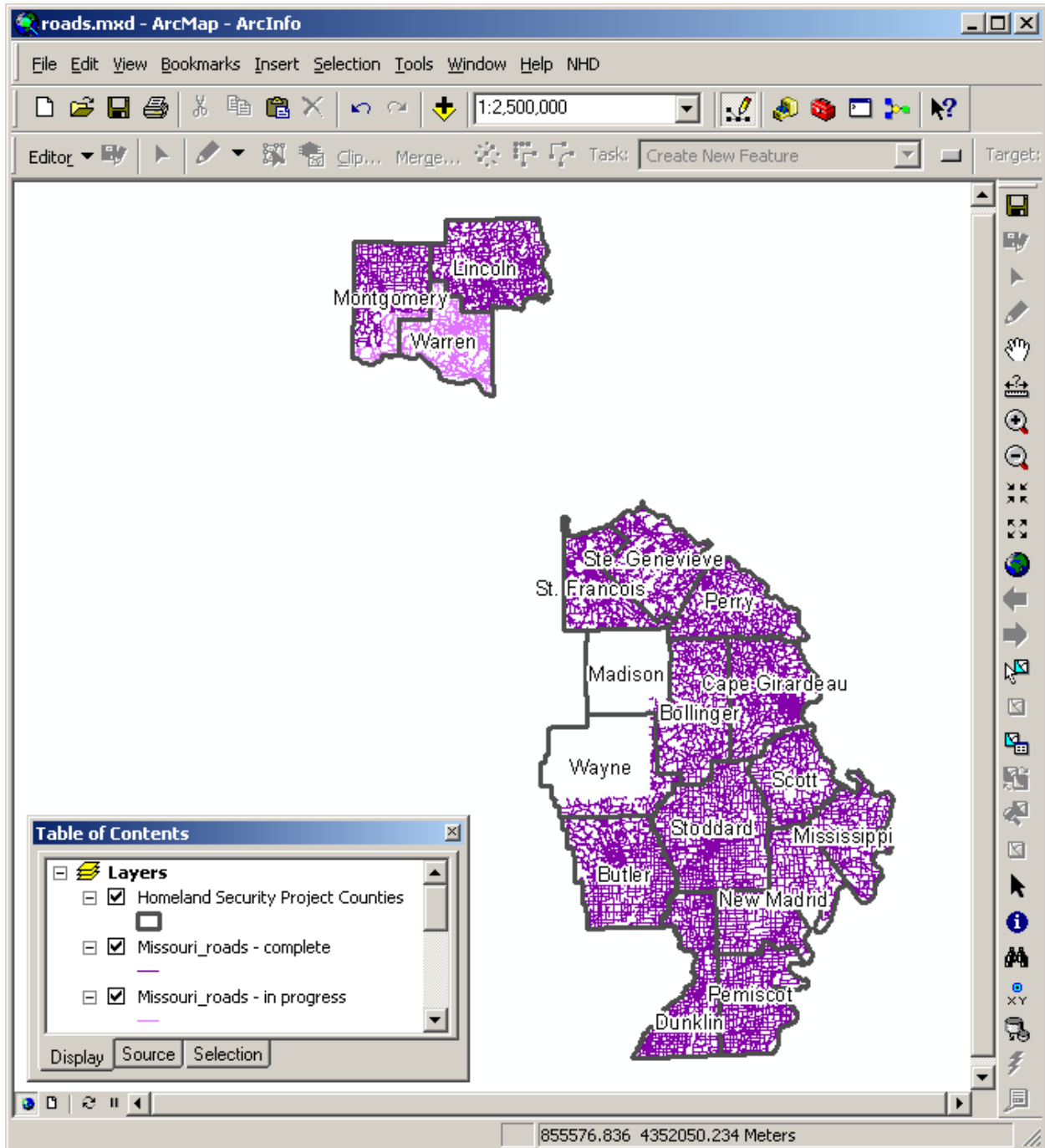
Streams

- 10 complete counties
- 6 counties in progress
- 1 counties to start



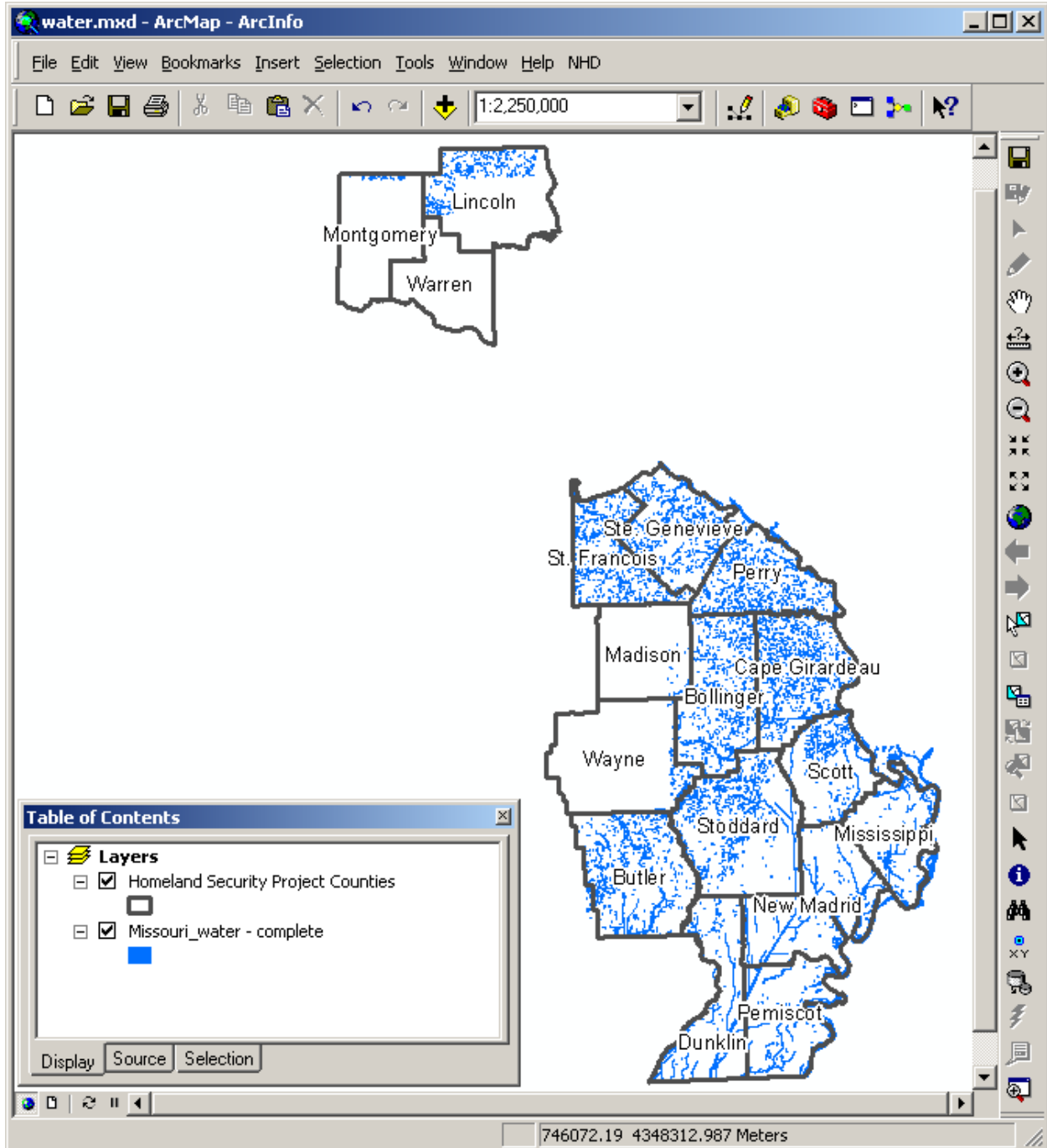
Roads

- 13 complete counties
- 4 counties in progress
- 0 counties to start



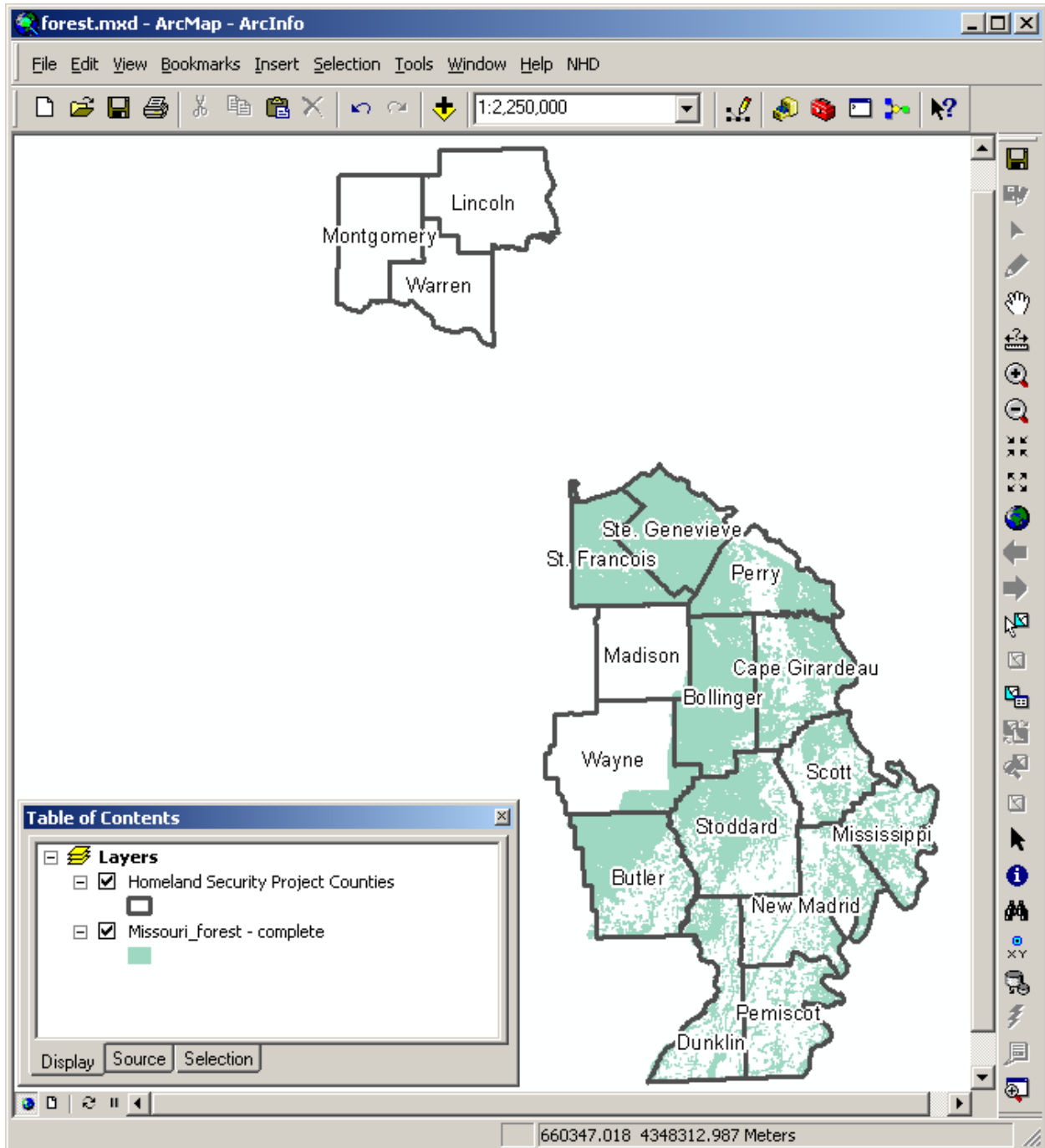
Waterbodies

- 12 complete counties
- 4 counties in progress
- 1 county to start



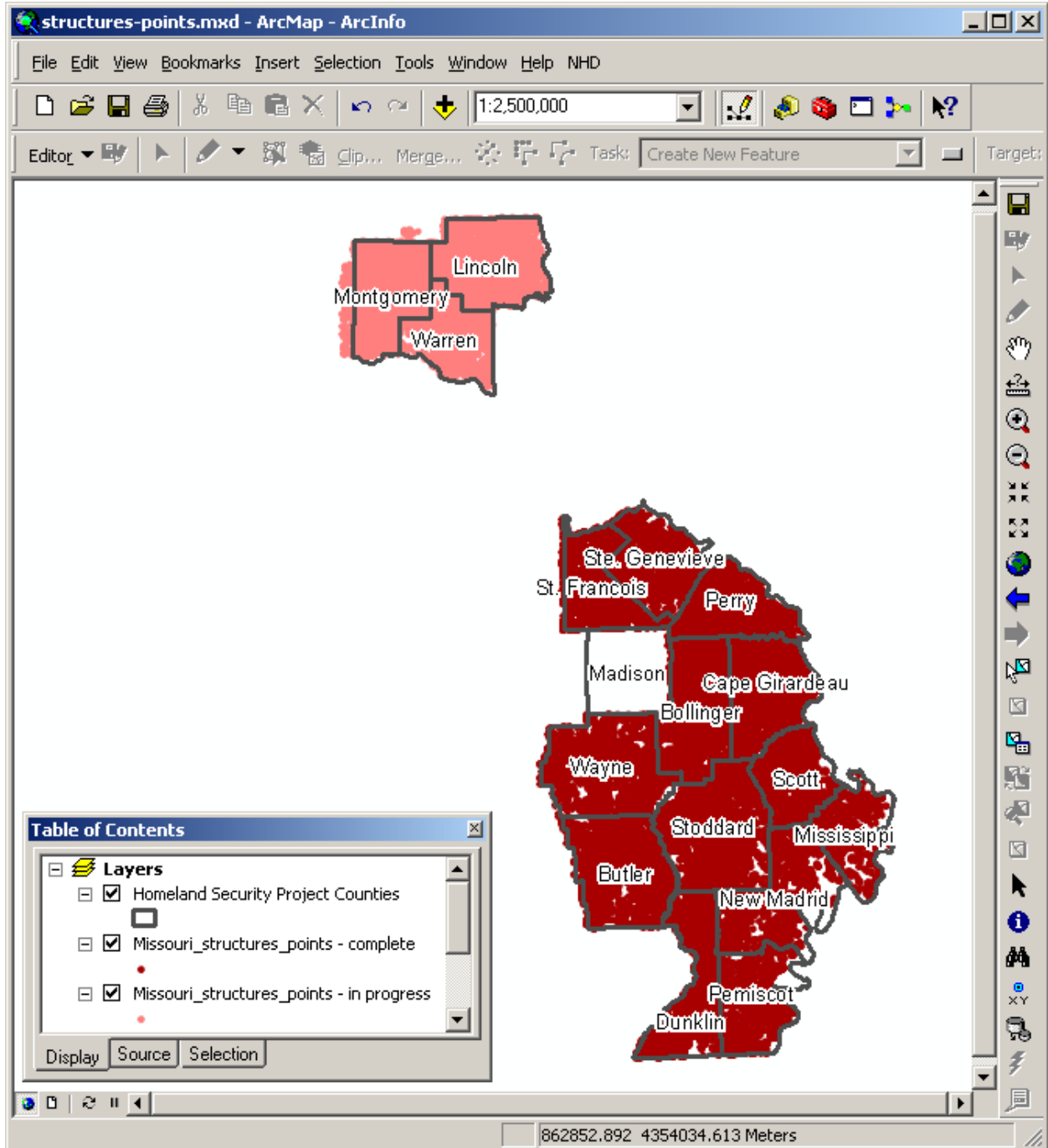
Forest

- 12 complete counties
- 2 counties in progress
- 3 counties to start



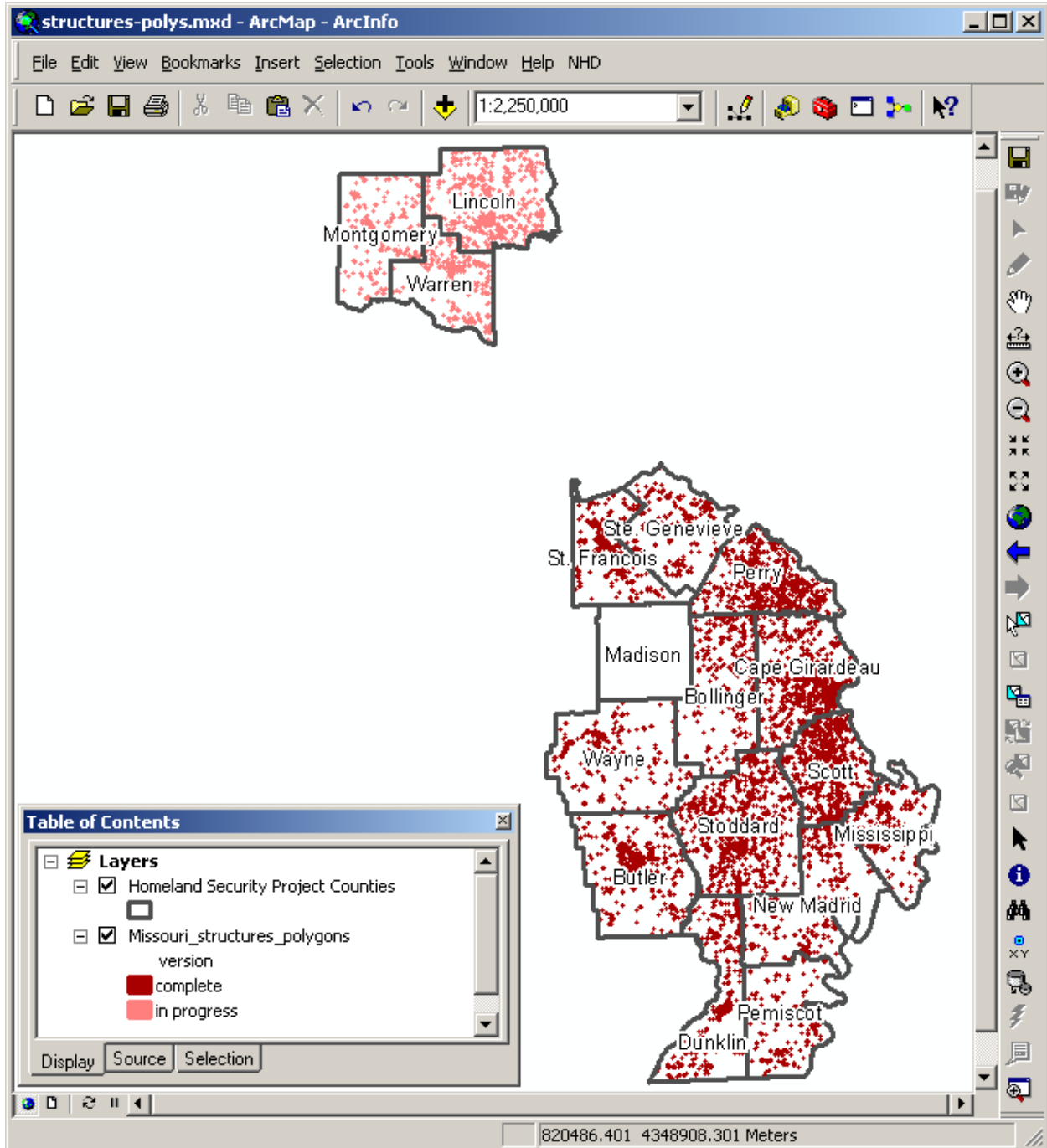
Structure Points

- 13 complete counties
- 3 counties in progress
- 1 counties to start



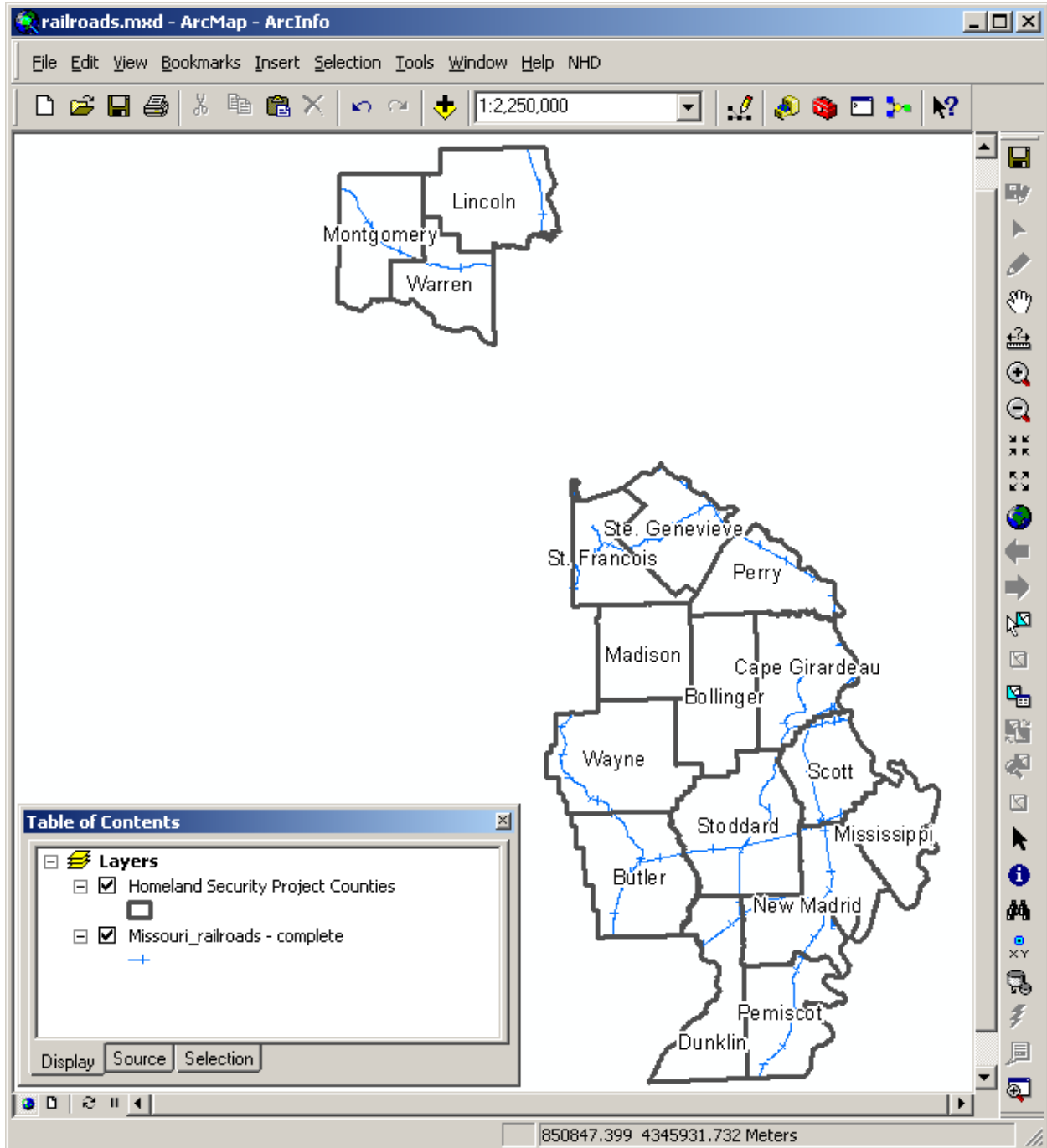
Structure Polygons

- 13 complete counties
- 3 counties in progress
- 1 county to start



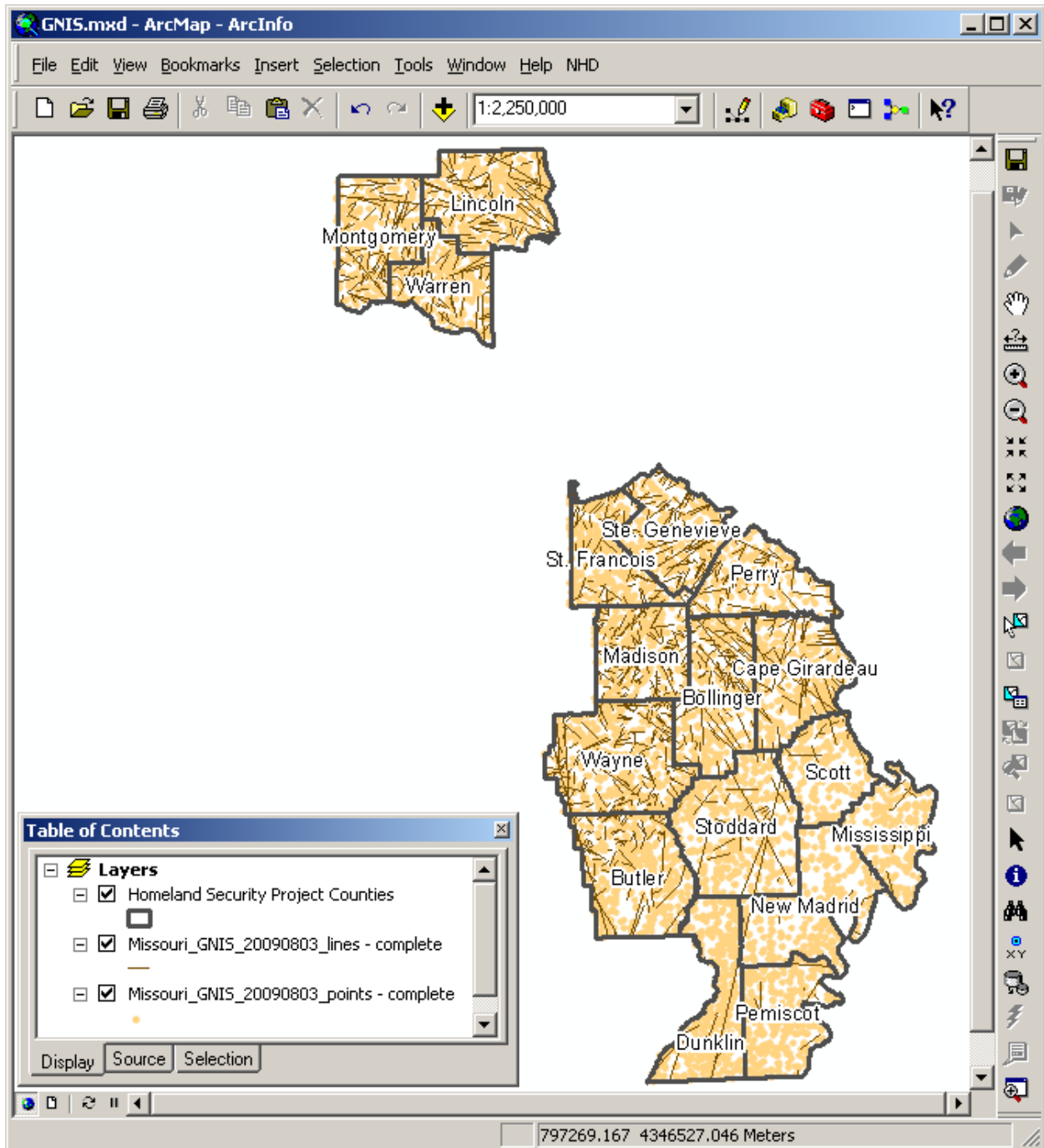
Railroads

- 17 complete counties
- 2 counties have no railroads



Geographic Names Information System Points and Lines

- 17 complete counties
- 0 counties in progress
- 0 county to start



Census Tiger Landmarks

- 17 complete counties
- 0 counties in progress
- 0 county to start

