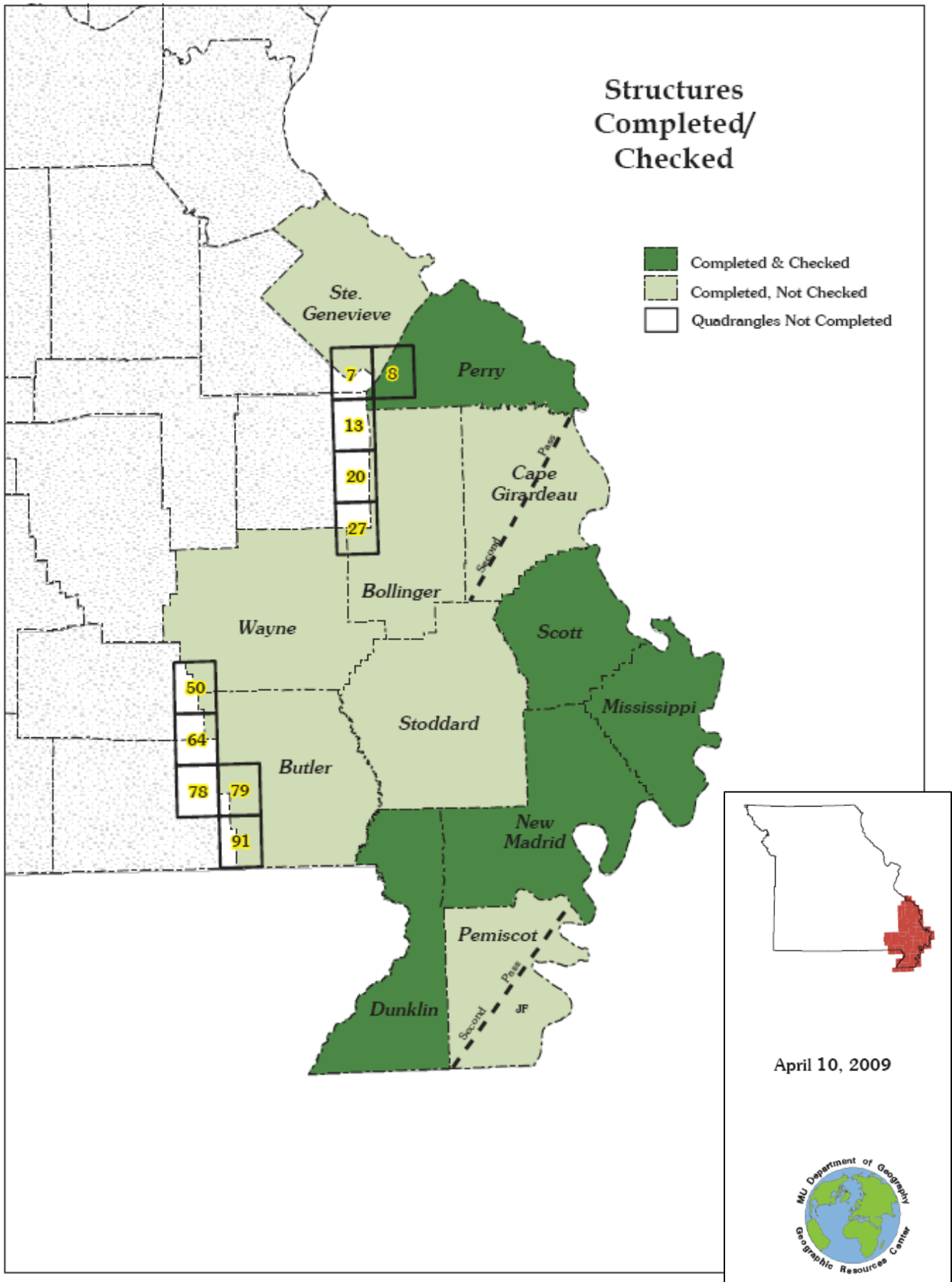


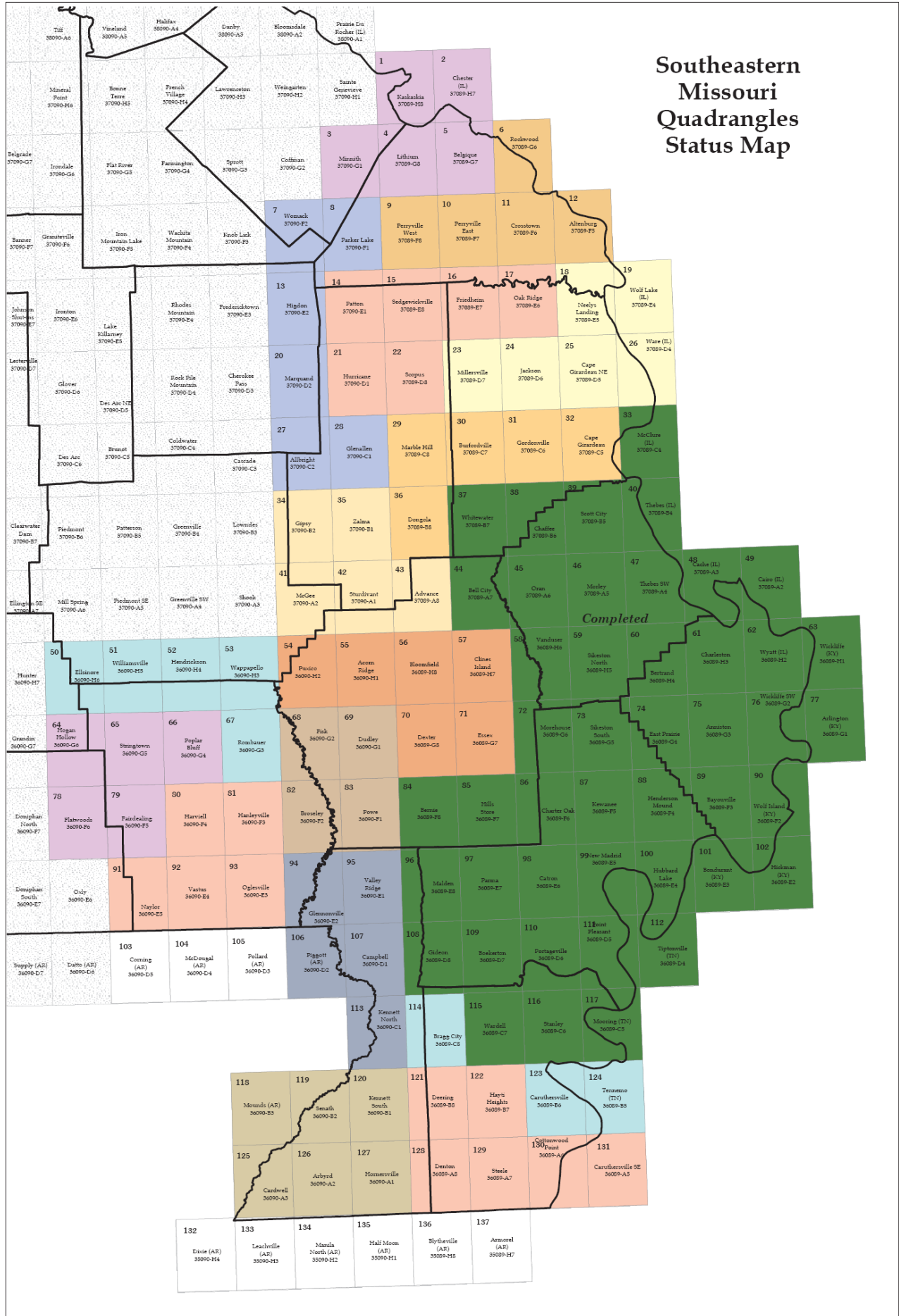
# Structures Completed/Checked

- Completed & Checked
- Completed, Not Checked
- Quadrangles Not Completed



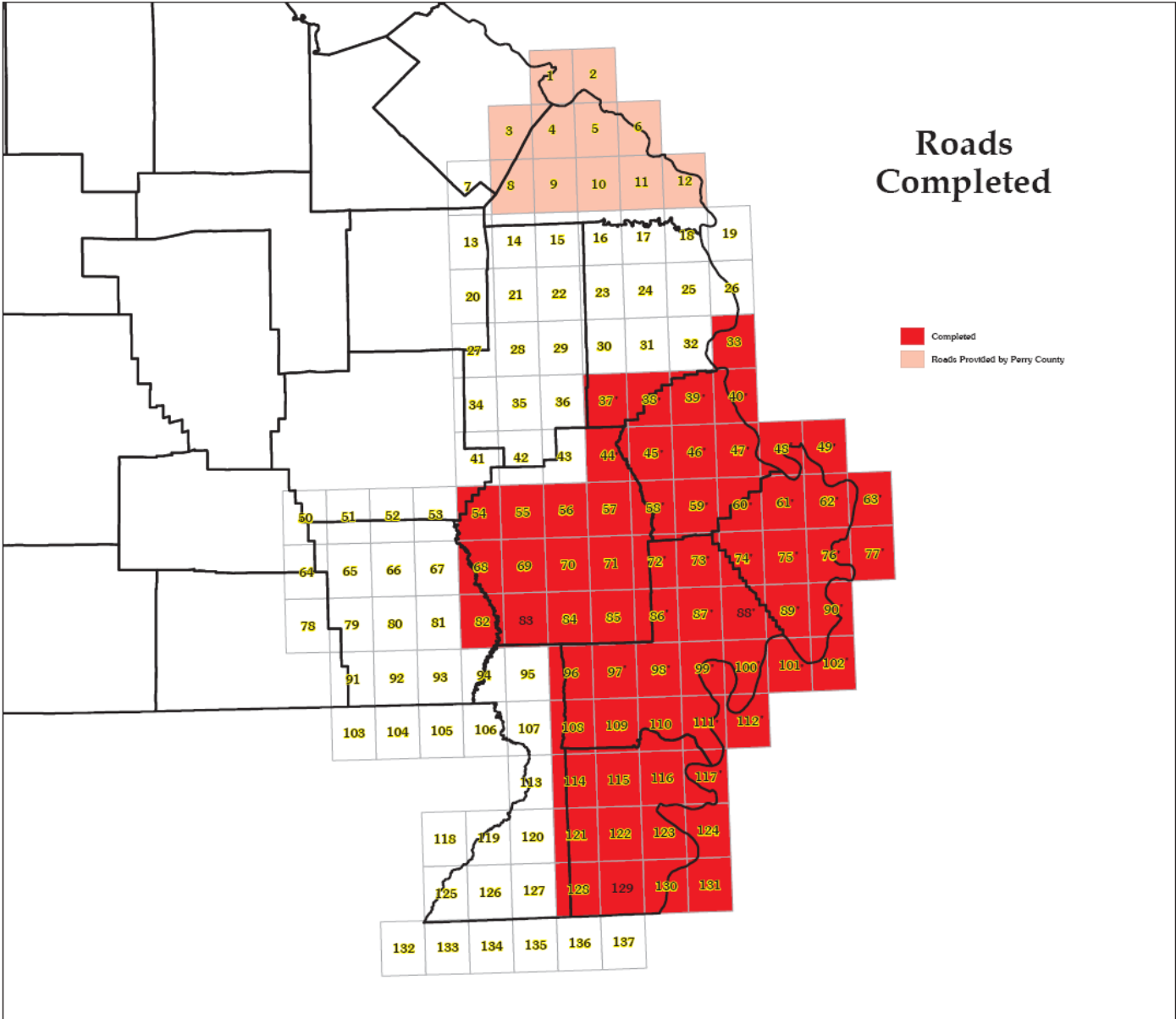
\* Completed in 2008

# Southeastern Missouri Quadrangles Status Map



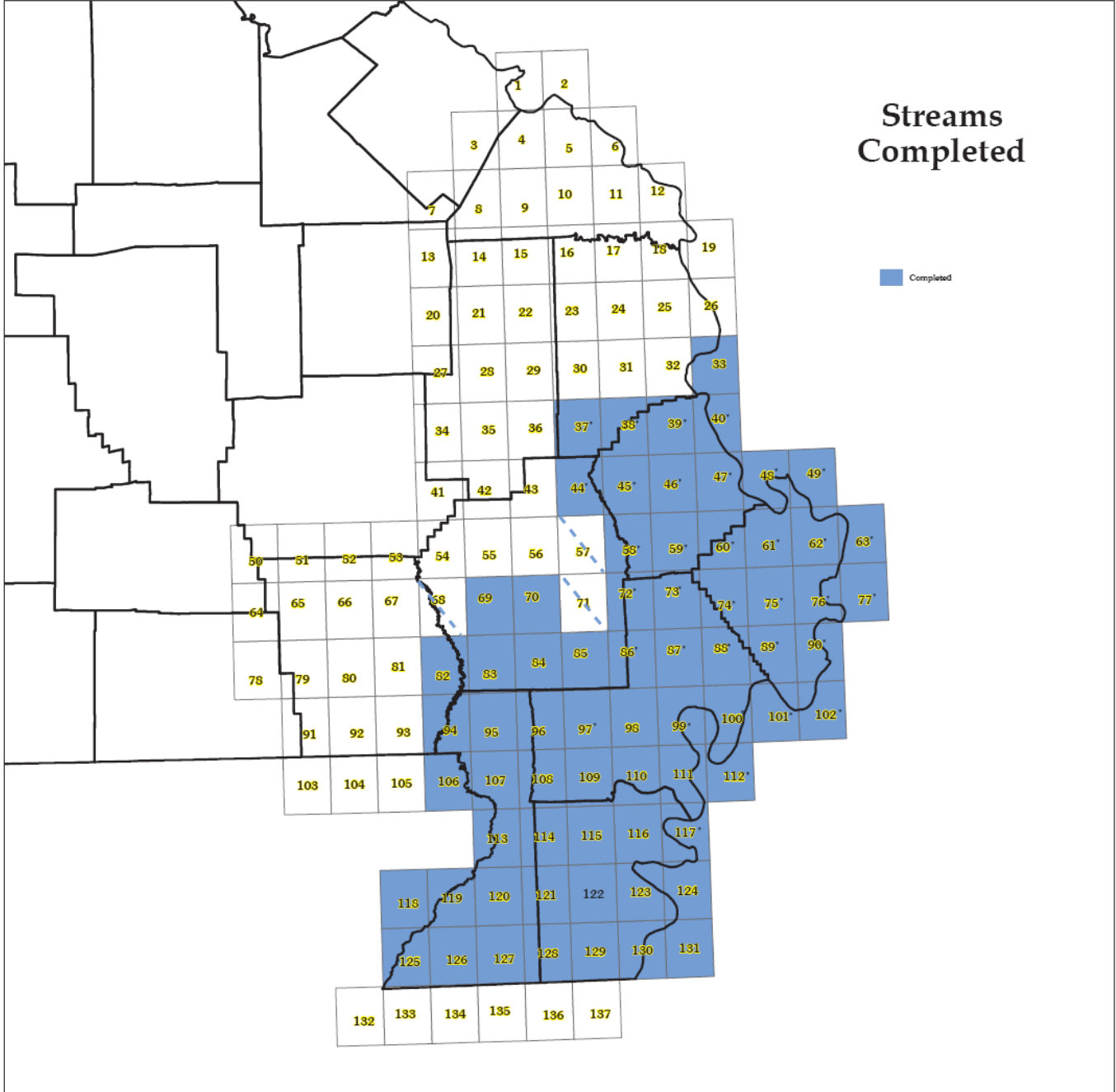
# Roads Completed

- Completed
- Roads Provided by Perry County



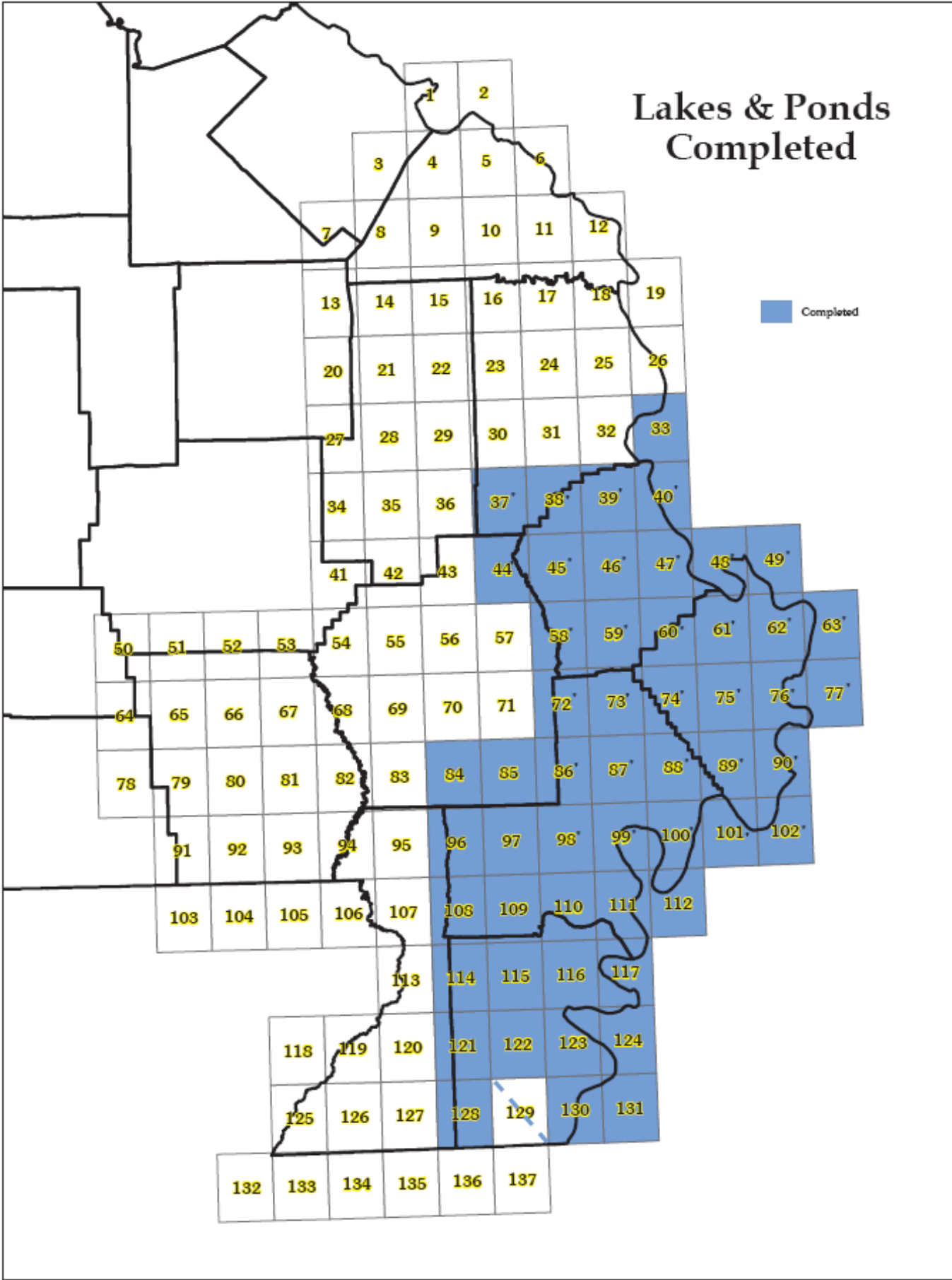
# Streams Completed

Completed

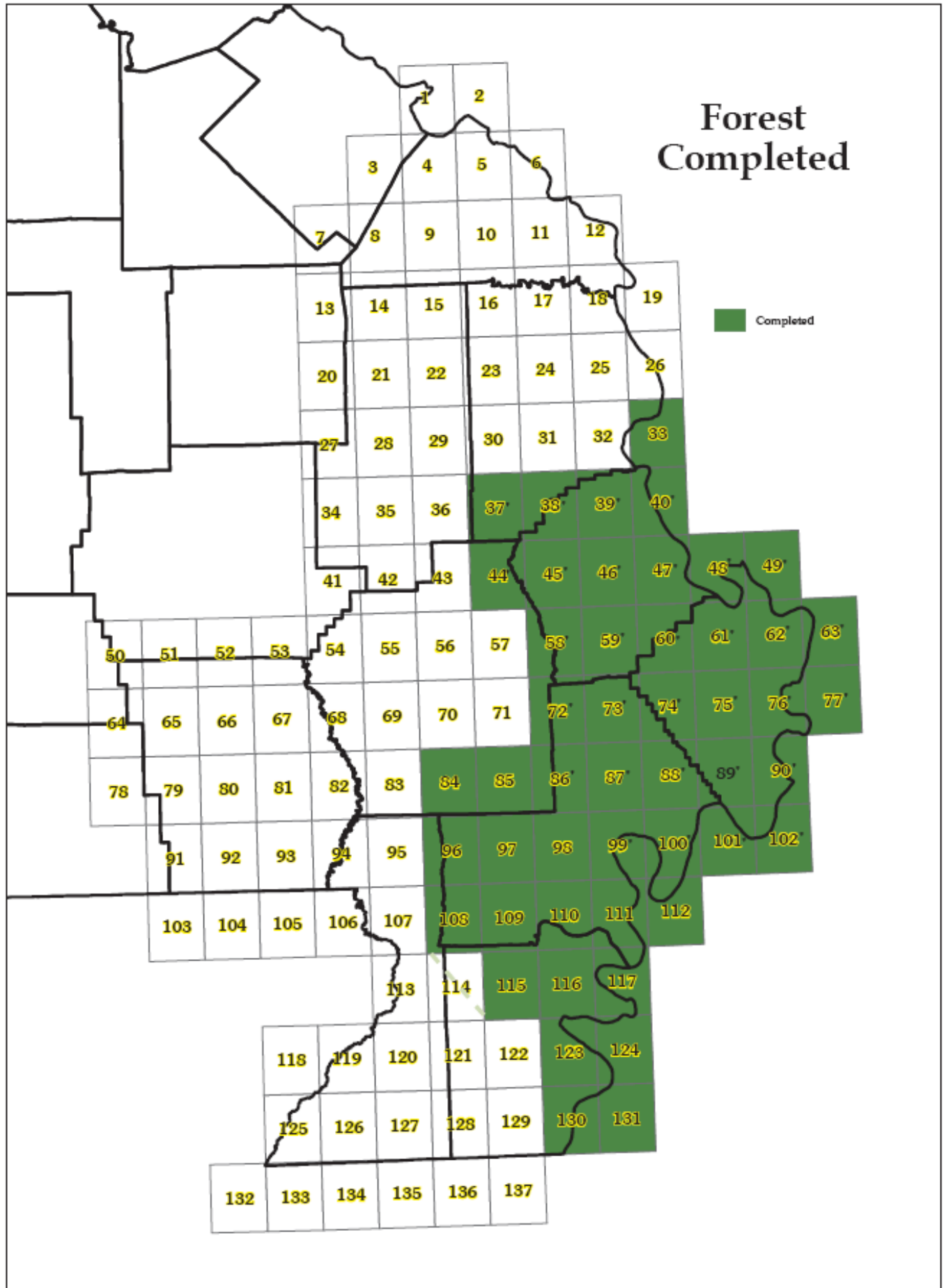


# Lakes & Ponds Completed

Completed



# Forest Completed



Homeland Security Project Structures Status Sheet

County name	First Pass		Second Pass		Running Total		Status		
	# polygons	# points	# polygons	# points	# polygons	# points	First Pass	Second Pass	
Bollinger	431	10,301			431	10,301	1st pass finished (KS)		
Butler	1,237	17,561			1,237	17,561	1st pass finished		
Cape Girardeau	2,112	30,568	2,116	30,666	2,116	30,666	1st pass finished	in progress (NH)	
Dunklin	1,009	13,650	1,032	15,278	1,032	15,278	1st pass finished	2nd pass finished (KS)	
Mississippi	-	-	576	6,530	576	6,530	1st pass finished	2nd pass finished	
New Madrid	724	8,316	820	10,424	820	10,424	1st pass finished	2nd pass finished (JF)	
Pemiscot	521	8,561	535	9,378	535	9,378	1st pass finished (JF)	in progress (JF)	
Perry	-	-	1,220	13,979	1,220	13,979	1st pass finished	2nd pass finished (BR)	
Scott	-	-	2,138	17,121	2,138	17,121	1st pass finished	2nd pass finished	
Ste. Genevieve	1,207	8,294			1,207	8,294	1st pass finished		
Stoddard	1,763	15,952			1,763	15,952	1st pass finished		
Wayne	379	7,559			379	7,559	1st pass finished		
Totals:					13,454	163,043			
Total number of features:					176,497				

Updated: 9-Apr-09