

Homeland Security Project Structures Status Sheet

County name	First Pass		Second Pass		Running Total		Status		
	# polygons	# points	# polygons	# points	# polygons	# points	First Pass	Second Pass	
Bollinger	431	10,301	422	10,828	422	10,828	1st pass finished (KS)	in progress (JF)	
Butler	1,237	17,561			1,237	17,561	1st pass finished	in progress (JH)	
Cape Girardeau	2,112	30,568	2,112	32,253	2,112	32,253	1st pass finished	in progress (NH)	
Dunklin	1,009	13,650	1,032	15,278	1,032	15,278	1st pass finished	2nd pass finished (KS)	
Mississippi	-	-	576	6,530	576	6,530	1st pass finished	2nd pass finished	
New Madrid	724	8,316	820	10,424	820	10,424	1st pass finished	2nd pass finished (JF)	
Pemiscot	521	8,561	533	9,447	533	9,447	1st pass finished (JF)	2nd pass finished (JF)	
Perry	-	-	1,220	13,979	1,220	13,979	1st pass finished	2nd pass finished (BR)	
Scott	-	-	2,138	17,121	2,138	17,121	1st pass finished	2nd pass finished	
* Ste. Genevieve	1,207	8,294			1,207	8,294	1st pass finished		
Stoddard	1,763	15,952	1,754	16,443	1,754	16,443	1st pass finished	in progress (KS)	
* Wayne	379	7,559			379	7,559	1st pass finished		
Totals:					13,430	165,717			
Total number of features: 179,147									


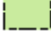

Updated: 11-May-09

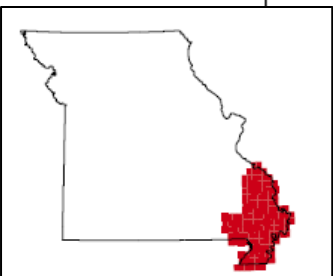
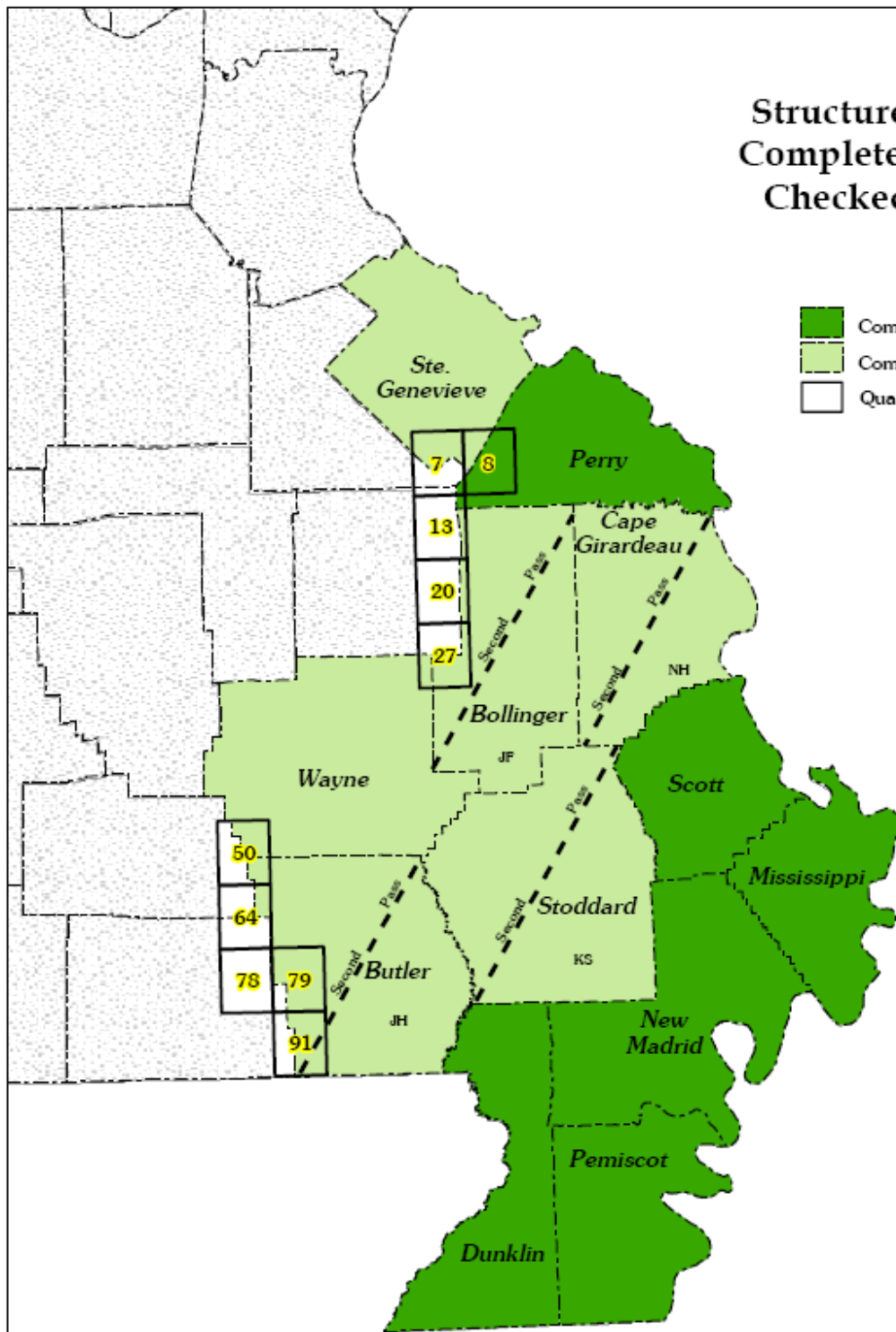
\* = not in current quadrangle development area

Homeland Security Project Quadrangle Mapping and Data Development Status Sheet

Number of Completed Quads on:	Map & Geopdf	Layers			
		Streams	Roads	Waterbodies	Forest
1/8/2009	28	38	38	34	35
5/11/2009	46	74	65	57	57

# Structures Completed/Checked

-  Completed & Checked
-  Completed, Not Checked
-  Quadrangles Not Completed

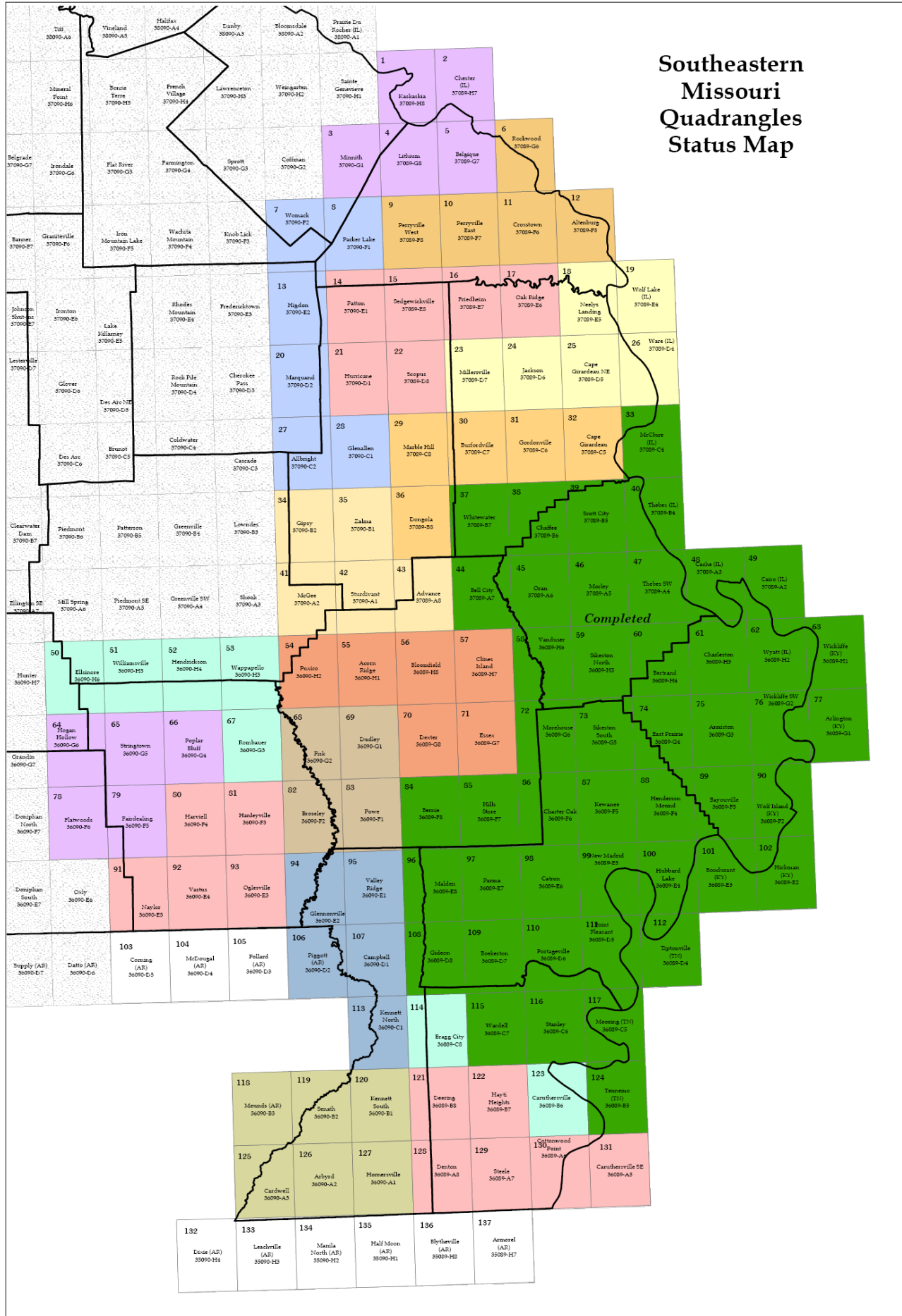


May 11, 2009



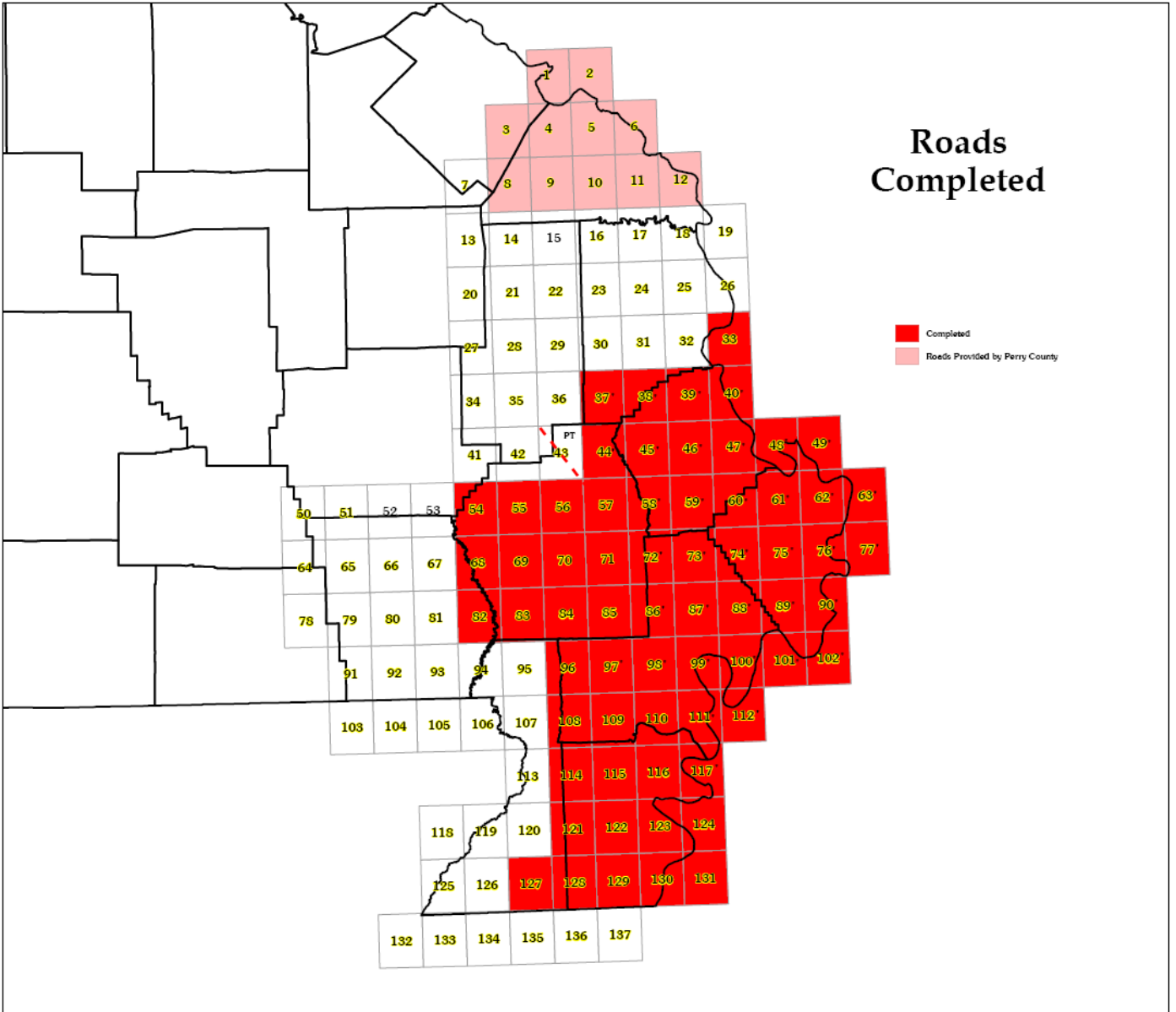
\* Completed in 2008

# Southeastern Missouri Quadrangles Status Map



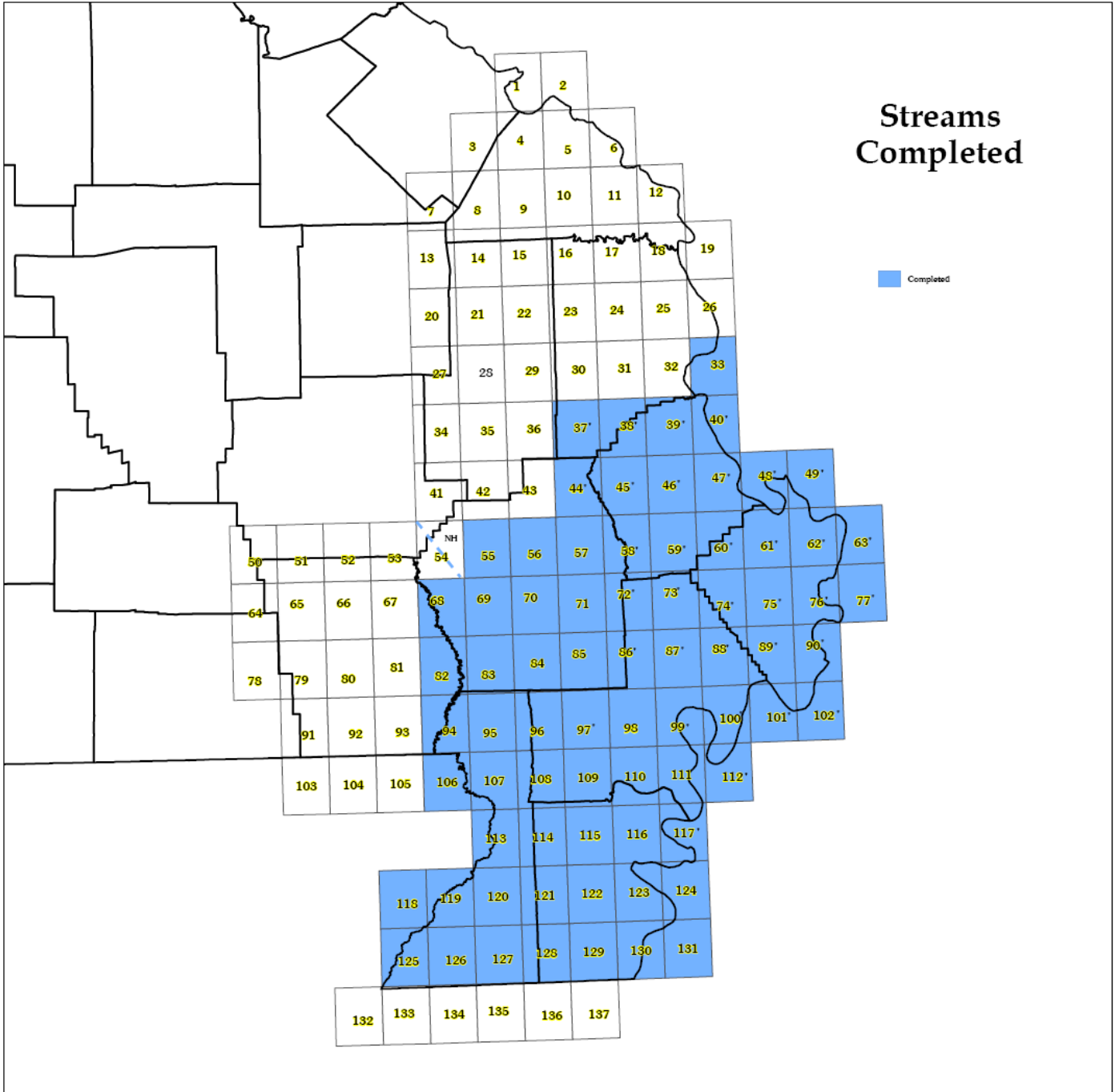
# Roads Completed

- Completed
- Roads Provided by Perry County



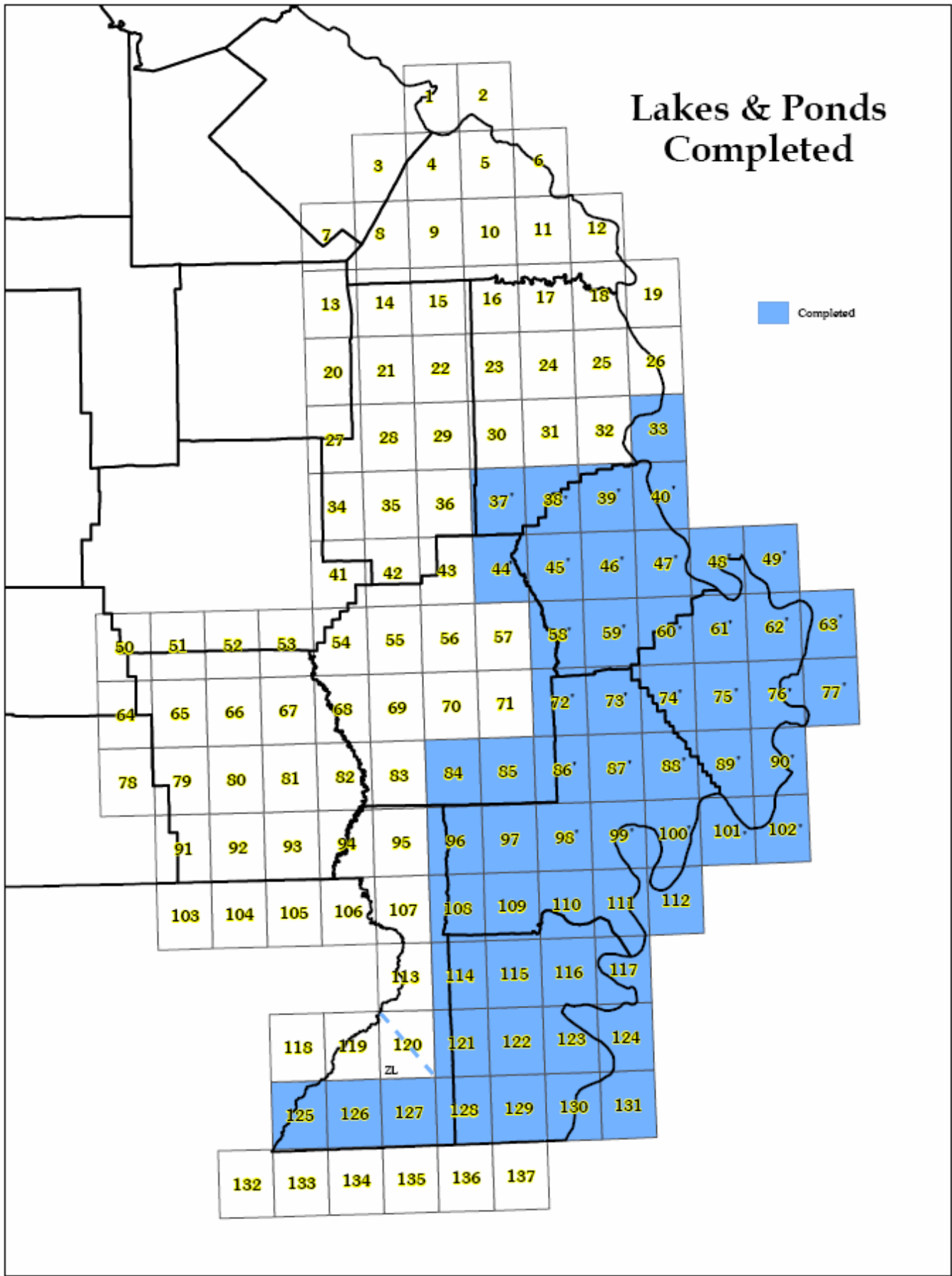
# Streams Completed

Completed



# Lakes & Ponds Completed

Completed



# Forest Completed

Completed

