



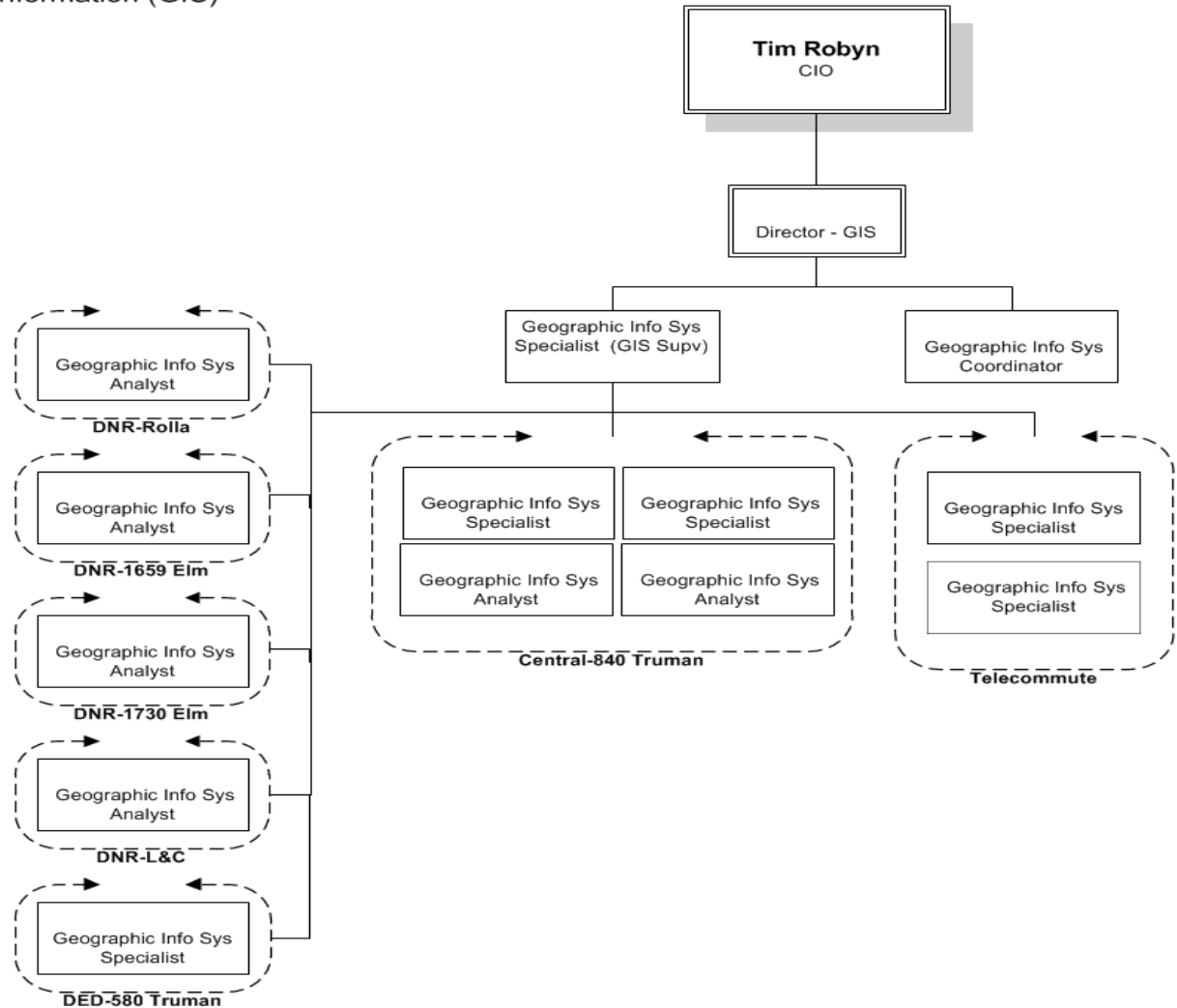
Office of Geospatial Information
State of Missouri

Organization

Office of Administration

Information Technology Services Division
Office of Geospatial Information (GIS)

- Agriculture
- Attorney General
- Congress
- Corrections
- Economic Development
- Governor's Office
- Higher Education
- Health & Senior Services
- House
- Info Technology
- Insurance
- K-12 Education
- Labor & Ind. Relations
- Mental Health
- Natural Resources
- Office of Administration
- Public Safety/SEMA
- Revenue
- Secretary of State
- Senate
- Social Services



Services Provided

GIS Analysis and Design - patterns and relationships between features.

Spatial Database Design & Development - design activities and reviews of end users systems requiring spatial data.

GIS Data Creation and Maintenance - convert digital information into meaningful and reliable GIS database layers.

GIS/GPS Technical Support & Training - assist with your training and technical needs.

Cartographic Services – map creation.

Emergency GIS Support - allows information to be visualized spatially, shared among state agencies, and updated real time empowering decision makers and saving lives.

GIS Web Application – map services for web based applications or as stand-alone applications.

Affiliates



MGISAC

**MISSOURI GEOGRAPHIC INFORMATION
SYSTEMS ADVISORY COUNCIL**

Purpose:

As a standing committee under Missouri's Chief Information Officer to foster cooperation among state agencies, local governments, private industry, academia, federal government and others in the field of geographic information technology (GIT).

Missouri Spatial Data Information Service (MSDIS)



Responsible for:

- data storage and access
- standardization of both digital and tabular data
- creation of the data dictionary
- compilation of metadata
- statewide GIS user information networks
- national clearinghouse of imagery data for Missouri

PROJECTS

Imagery Update

Purpose:

Acquire new state-wide leaf-off 2 foot resolution aerial imagery; imagery is used by Transportation, Conservation, Natural Resources, SEMA and others. Current imagery is from 2009.

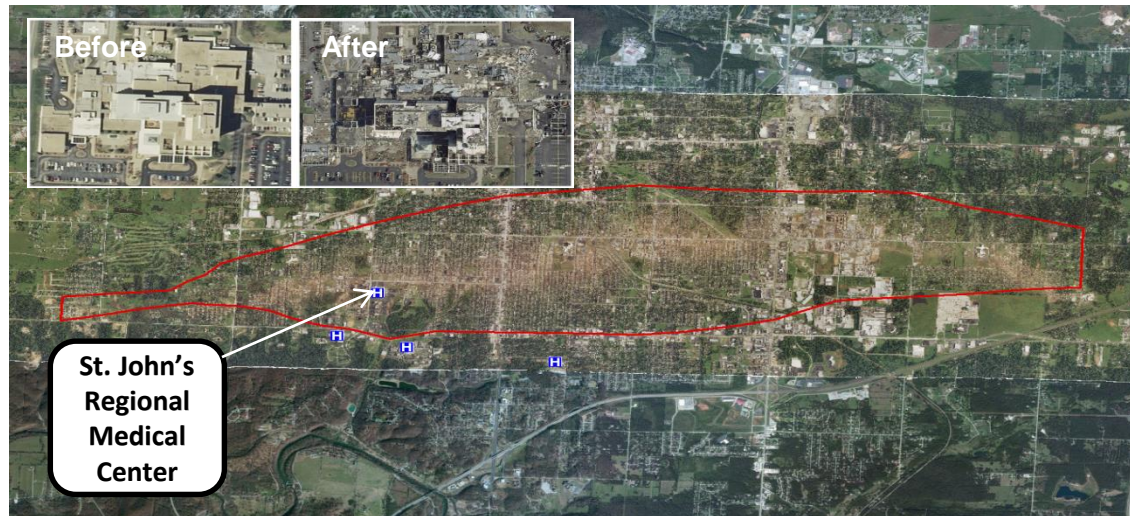
Status:

Obtained two foot pixel resolution imagery for the state from 2007 to 2009. A State Photogrammetric Services contract was re-bid and awarded to four pre-qualified providers of aerial imagery services. This contract was set-up to allow for local governmental use.

Timeframe:

- Over 3 year span
- Begin Fall 2014 or Spring 2015
- Leaf-off season

For more info:
www.flymoimagery.com



PROJECTS

Chemical Sites Buffer Analysis – SEMA

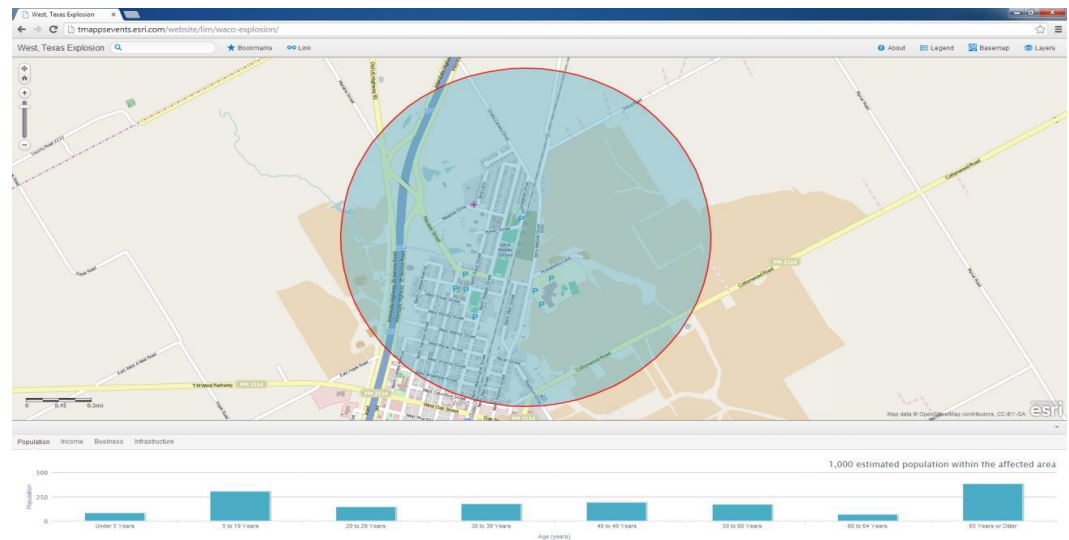
Purpose:

Develop a web map that would enable users to click on a chemical site to generate a buffer, which will then be used to produce a list of affected sites for vulnerable populations (e.g. day cares, schools, nursing homes).

Status:

ESRI developed a similar map for a west Texas explosion in 2013. We will utilize that map as a framework for this project.

Est. Completion Date:
June 2014



PROJECTS

GIS Server Rebuild – Phase I

Purpose:

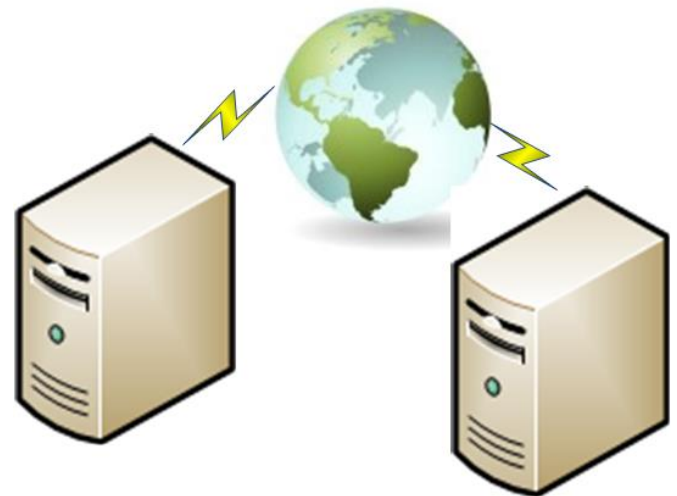
Reduce the GIS server hardware/software and geo-data redundancy by consolidation servers at ITSD-GIS and DHSS. More cost-effective and simplifies overall architecture.

Status:

Working with Web, Middleware, Application Server Support (WMASS) to identify the tasks and task assignments for consolidation.

Est. Completion Date:

May 2014



PROJECTS

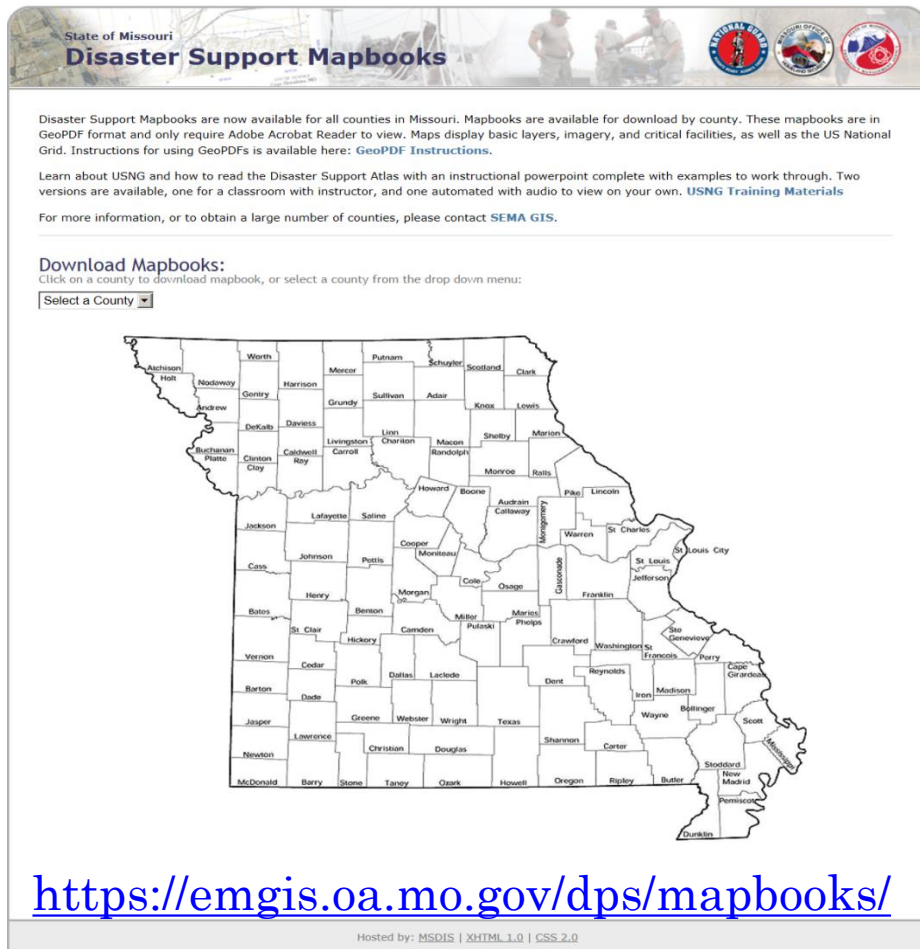
County Mapbooks

Disaster Support Mapbooks are now available for all counties in Missouri.

Mapbooks are available for download by county.

These mapbooks are in GeoPDF format and only require Adobe Acrobat Reader to view.

Maps display basic layers, imagery, and critical facilities, as well as the US National Grid.




State of Missouri
Disaster Support Mapbooks

Disaster Support Mapbooks are now available for all counties in Missouri. Mapbooks are available for download by county. These mapbooks are in GeoPDF format and only require Adobe Acrobat Reader to view. Maps display basic layers, imagery, and critical facilities, as well as the US National Grid. Instructions for using GeoPDFs is available here: [GeoPDF Instructions](#).

Learn about USNG and how to read the Disaster Support Atlas with an instructional powerpoint complete with examples to work through. Two versions are available, one for a classroom with instructor, and one automated with audio to view on your own. [USNG Training Materials](#)

For more information, or to obtain a large number of counties, please contact [SEMA GIS](#).

Download Mapbooks:
Click on a county to download mapbook, or select a county from the drop down menu:



<https://emgis.oa.mo.gov/dps/mapbooks/>

Hosted by: MSDIS | XHTML 1.0 | CSS 2.0

PROJECTS

Other

- Introduction to GIS for Managers/IT – MOODLE based training
- Enterprise geo-coding solution
- Mobile friendly maps

TO CONTACT US

Email

MO.GIS@oa.mo.gov

Web

<http://content.oa.mo.gov/information-technology-itsd/it-governance/office-geospatial-information>

301 West High St
Room 840
Truman State Office Building
Jefferson City, MO 65102